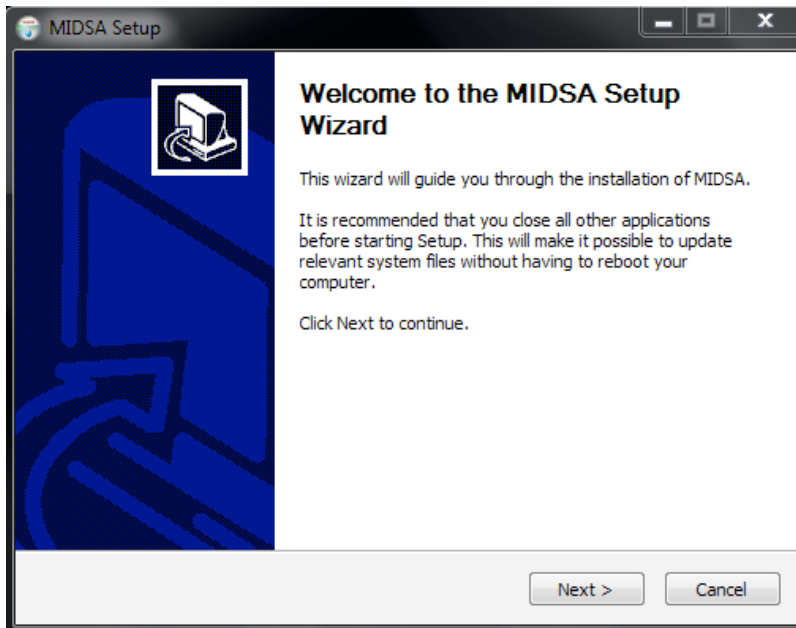


Installation Instructions

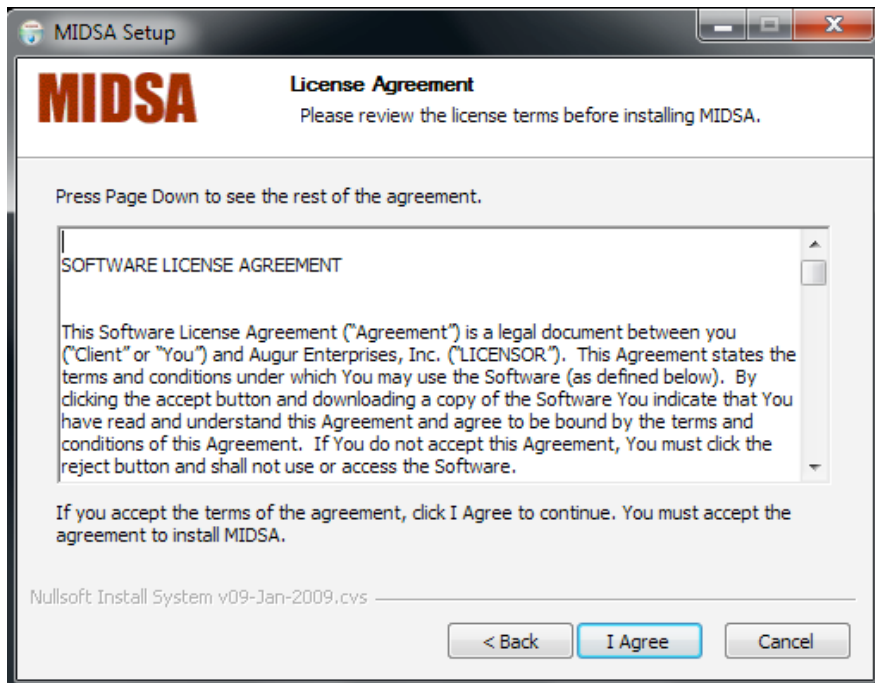
NOTE: If you downloaded the MIDSAs software double-click the installer icon (its name will be Setup_XXXXXXXXXXXXXXX or Setup_XXXXXXXXXXXXXXX.exe, where the x's are a string of numerals) and skip to step 3.

1. Insert the MIDSAs CD and wait for the MIDSAs menu to appear.
2. Select ***Install MIDSAs***.
3. A MIDSAs Setup Wizard appears.



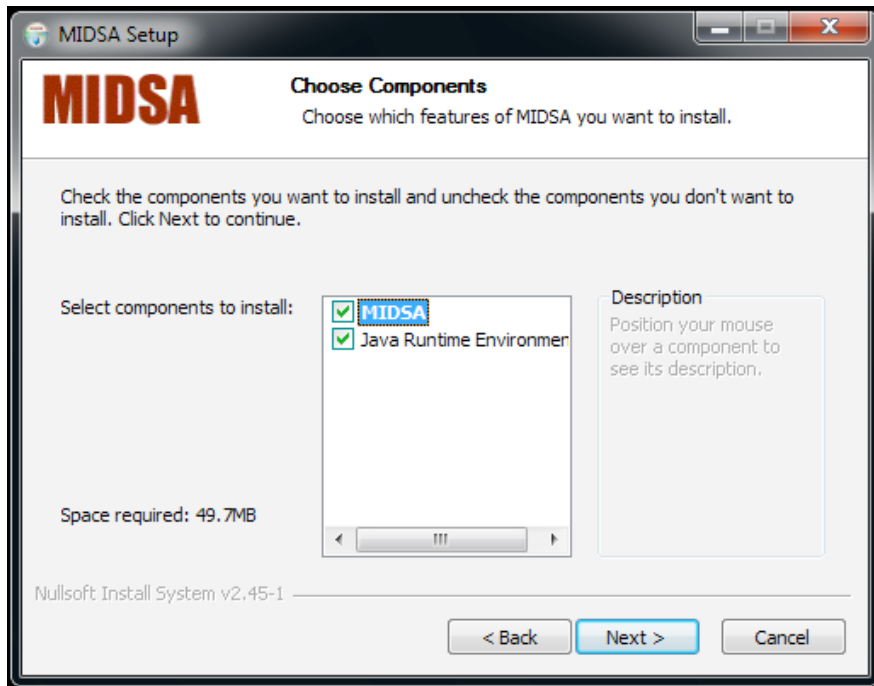
Click the ***Next*** button.

4. It will ask you to agree to a license agreement.



Indicate you accept the terms of the agreement by selecting the *I Agree* button.

5. Next comes a list of pieces to be installed.

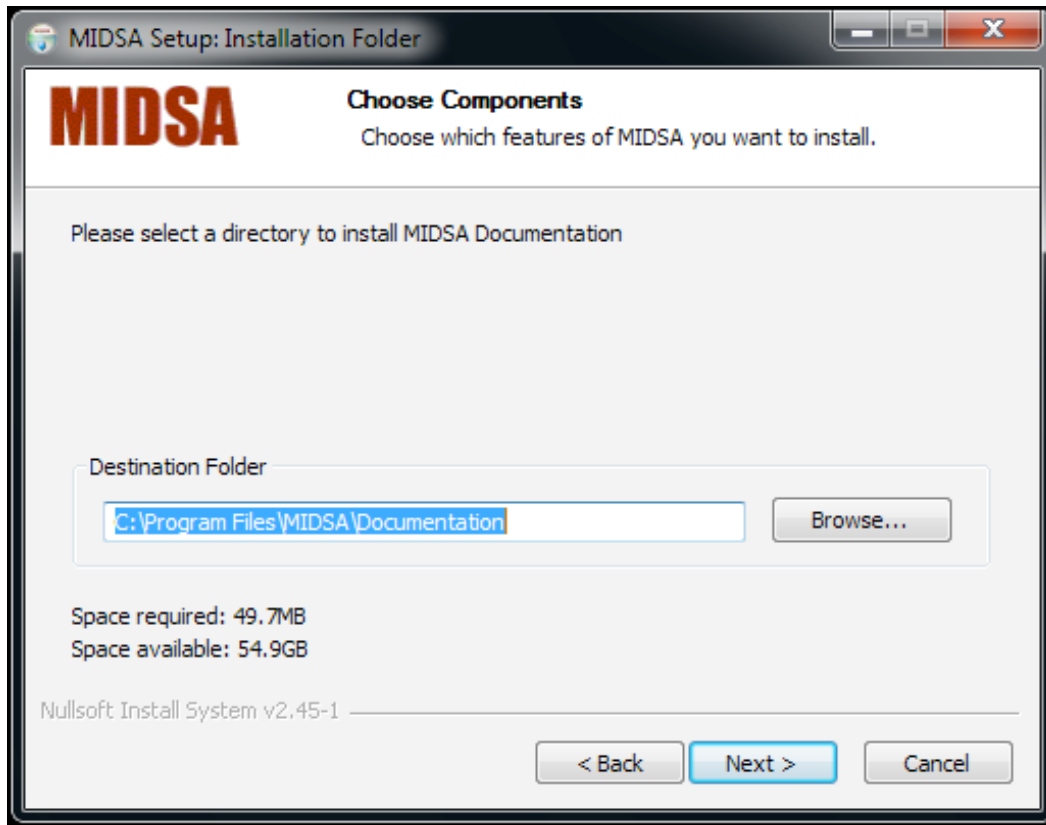


The first item is the MIDSAs program itself.

The second item is the Java Realtime Environment, which is the programming language MIDSAs uses. If you **know** you already have this program installed, you can uncheck the box by clicking on it. The installation of this program will be described in step 8.

Click the *Next* button.

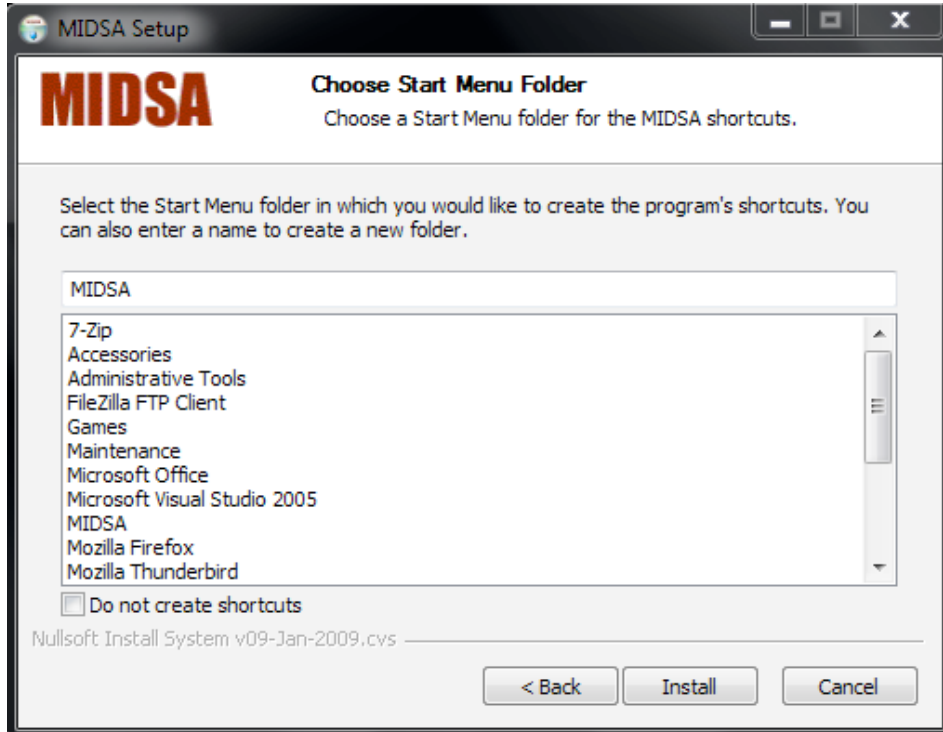
6. The next screen asks you where to place the Documentation.



Click the *Next* button.

NOTE: By default the Documentation will be installed in the MIDSAs folder in **Program Files** where it will be accessible from the **Start** menu. If you would like the Documentation to be installed elsewhere, click the **Browse** button and locate the desired folder. The Documentation includes the Software Manual, the Clinical Manual, and the Timeline Instructions.

7. The next window of the installation allows you to choose to add shortcuts to the **Start** menu.



If you do nothing, a MIDSAs folder will be created in **All Programs** in the **Start** menu. It will contain the MIDSAs program and the Documentation. If you prefer another location in the **All Programs** menu, choose that folder.

We do not recommend clicking on the checkbox *Do not create shortcuts* at the bottom of the dialog box. This will prevent access to the MIDSAs program from the **All Programs** menu.

Click the **Install** button.

8. Next Java SE will be installed.

NOTE: If Java SE is already installed, the install program will ask you if you would like to reinstall it. There is no reason to do this. Simply click *No* on the dialog box that asks you if you would like reinstall.

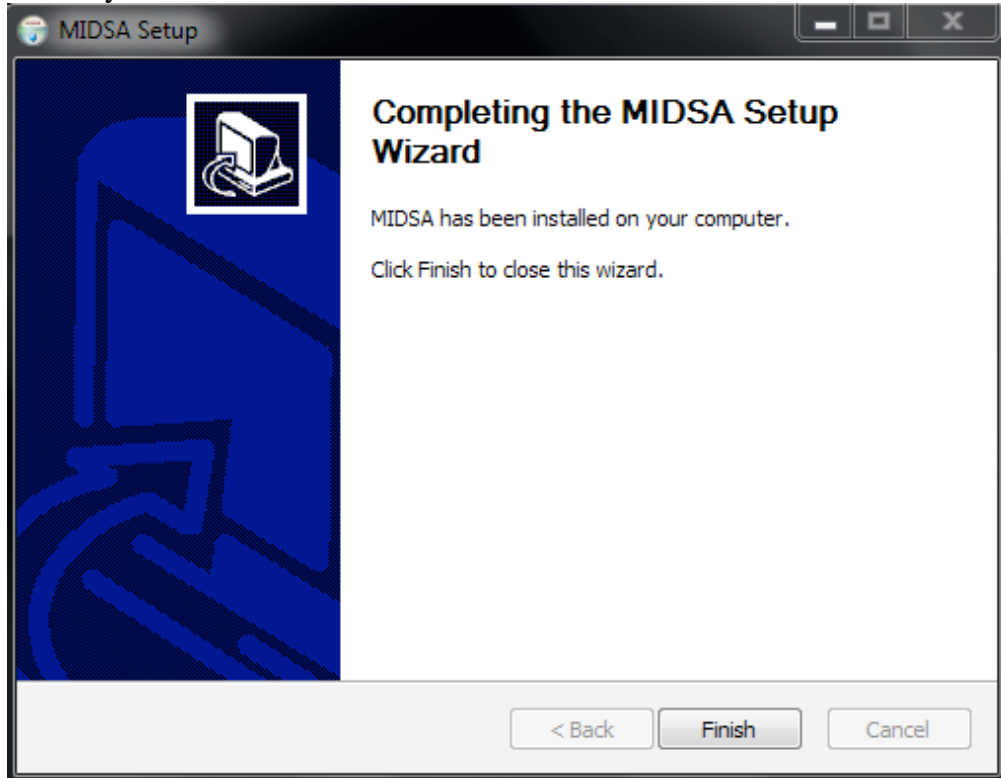
If Java SE is not installed, the following window will appear:



Click the *Accept* button.

When the installation is complete click the *Finish* button.

9. You should get the following screen that tells you the application has installed correctly:



Click the *Finish* button.

To interpret the reports, refer to the MIDSAs Clinical Manual. This and other manuals are available in PDF format on the CD, in the folder where you told the installer to put them, and at www.midsa.us/customer-support.php.